

2. USB memory

NOTE

- USB memory must be connected with the main power switch off.

2.1 Preparation

2.1.1 System preparation

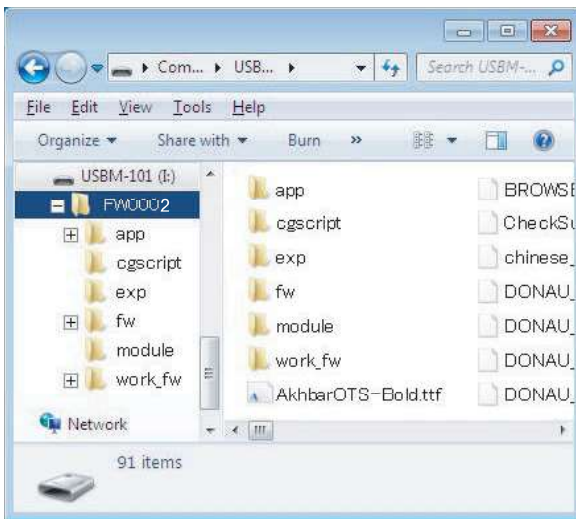
- PC with USB ports
- USB memory

NOTE

- Possible to be non-operational products.
- USB flash memory compatible with the USB (1.1/2.0/3.0) interface
The speed is limited to USB2.0 specifications even if using a device that supports USB3.0.
- The USB memory is formatted in FAT32 format.
- No security functions such as encryption and password lock have been added (or the USB memory allows its security functions to be turned OFF).
- A USB memory that is recognized by the computer as two or more drives cannot be used.
- We recommend that you use a memory device with no more than 32 GB of capacity.

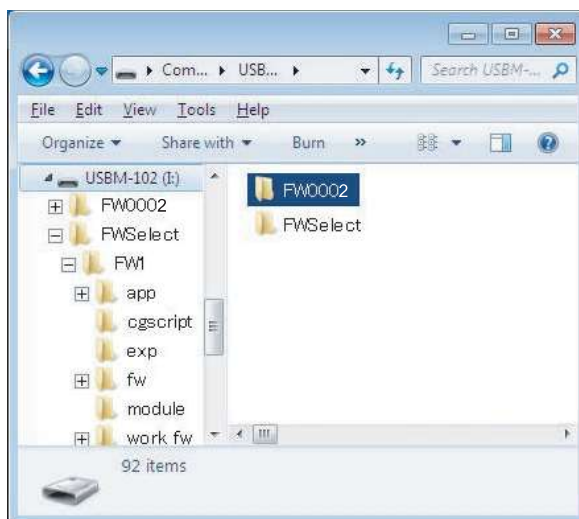
2.1.2 USB memory used to update firmware

1. Uncompress the firmware file.
2. Connect the USB memory to the PC, and copy the extracted data [FW0002] to the root directory of the USB memory.



NOTE

- More than one firmware data with a single model can be stored in the USB memory.
- In this case, copy the firmware data to the USB memory according to the following procedures.
 1. Make the folder named "FWSelect" (case-sensitive) to the root directory of the USB memory.
 2. Make a folder with any folder name (one byte alphanumeric characters, maximum 40 characters) under "FWSelect" folder, and store the firmware data to the folder.



2.2 Procedure

1. Turn OFF the main power switch.

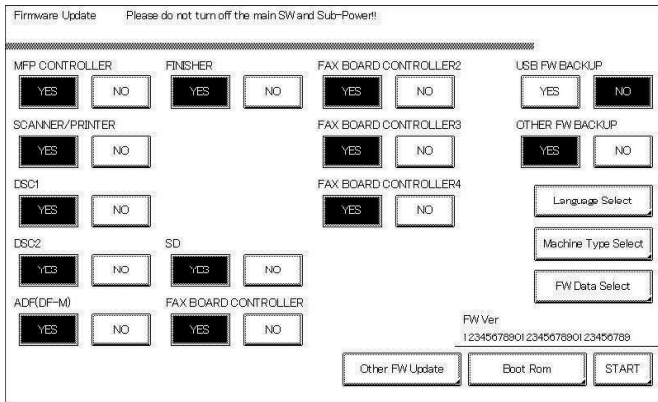
2. Connect the USB memory containing the firmware into the USB port on the right side of the operation panel.



NOTE

- USB memory must be connected with the main power switch off.

3. Turn the main power switch ON while pressing the Stop key.
4. Control panel shows F/W items to be updated, and select the particular type of F/W to be updated. (Select [YES].)

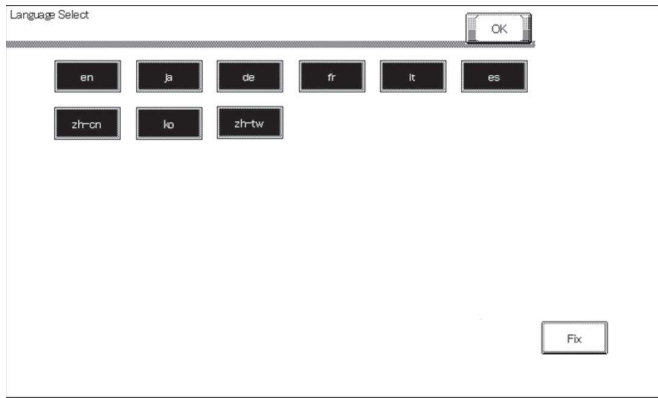


F/W to be updated	Appropriate board	Remark
MFP CONTROLLER	eMMC board (eMMC)	-
SCANNER/PRINTER	MFP board (MFPB)	-
FAX BOARD CONTROLLER1	Fax board/1 (FAXB/1)	Only when FK-514 is mounted
FAX BOARD CONTROLLER2	Fax board/2 (FAXB/2)	Only when FK-514 is mounted
FAX BOARD CONTROLLER3	Fax board/3 (FAXB/3)	Only when FK-515 is mounted
FAX BOARD CONTROLLER4	Fax board/4 (FAXB/4)	Only when FK-515 is mounted
ADF (DF-M)	DF control board (DFCB)	Only when DF-704/DF-629 is mounted
FINISHER	FS control board (FSCB)	Only when FS-533 or FS-534 is mounted
SD	SD drive board (SDDB)	Only when FS-534SD is mounted
DSC1	DSC board/1 (DSCB/1)	Only when SC-508 is mounted
DSC2	DSC board/2 (DSCB/2)	Only when SC-508 is mounted

NOTE

- Unless one of the keys on the control panel is pressed, firmware is automatically updated after 30 seconds when the main power switch is turned on.
- When the BootRom file is in the firmware data, [BootRom] key is displayed. Pressing the key updates data.
- If either or both of the SCB file and power sub CPU file are contained within the firmware data, the [Other FW Update] key displays. Press the key to update.
- When more than one firmware are stored in step 1, pressing [FW Data Select] enables selection. (Data of other models cannot be selected.)
(At this time, the data marked with an asterisk on the upper-left side of the data selection screen is the firmware data in the "FW0002" folder in the USB memory device.)

5. Press the [Language Select].
6. On the Language Select screen, select a language to be displayed on the LCD area of the control panel, then touch [Fix].

**NOTE**

- The language selected on this screen is displayed on the [Language Selection](#) screen of Utility.
- Up to 9 languages are selectable. However, Japanese and English are essential options.

- Touch [OK] to go back to the firmware update selection screen.
- Press the [START]. (At this time, the Start key starts blinking red.)
- Check that the control panel shows the message indicating that the data has been rewritten correctly ([Downloading Completed]). (The Start key lights blue.)
- Turn OFF the main power switch.
- Remove the USB memory.
- Turn ON the main power switch.
- Call the Service Mode to the screen.
- Select the [Firmware Version].
- Make sure if the version of firmware is updated.

2.3 Action when data transfer fails

- If “NG” appears on the control panel, indicating that rewriting has been unsuccessful (in which case the Start key lights up red), take the following steps.
 - Perform the data rewriting procedure again.
 - If the procedure is abnormally terminated, change the USB memory for a new one and try another rewriting sequence.
 - If the procedure is still abnormally terminated, change the board that has caused “NG” and carry out data rewriting procedure.

F/W to be updated	Appropriate board	Remark
MFP CONTROLLER	eMMC board (eMMCB)	-
SCANNER/PRINTER	MFP board (MFPB)	-
FAX BOARD CONTROLLER1	Fax board/1 (FAXB/1)	Only when FK-514 is mounted
FAX BOARD CONTROLLER2	Fax board/2 (FAXB/2)	Only when FK-514 is mounted
FAX BOARD CONTROLLER3	Fax board/3 (FAXB/3)	Only when FK-515 is mounted
FAX BOARD CONTROLLER4	Fax board/4 (FAXB/4)	Only when FK-515 is mounted
ADF (DF-M)	DF control board (DFCB)	Only when DF-704/DF-629 is mounted
FINISHER	FS control board (FSCB)	Only when FS-533 or FS-534 is mounted
SD	SD drive board (SDDB)	Only when FS-534SD is mounted
DSC1	DSC board/1 (DSCB/1)	Only when SC-508 is mounted
DSC2	DSC board/2 (DSCB/2)	Only when SC-508 is mounted

2.4 Entering the machine type information

- When MFP board is replaced, it is necessary to enter the machine type information.
- Refer to the following procedures to enter the machine type information.

Procedure

- Insert the USB memory to the USB port.
- Turn the main power switch ON while pressing the Stop key.
- Touch [Machine Type Select].

Firmware Update Please do not turn off the main SW and Sub-Power!!

MFP CONTROLLER: YES NO FINISHER: YES NO FAX BOARD CONTROLLER2: YES NO USB FW BACKUP: YES NO

SCANNER/PRINTER: YES NO FAX BOARD CONTROLLER3: YES NO OTHER FW BACKUP: YES NO

DSC1: YES NO FAX BOARD CONTROLLER4: YES NO Language Select

DSC2: YES NO SD: YES NO Machine Type Select

ADF(DF-M): YES NO FAX BOARD CONTROLLER: YES NO FW Data Select

FW Ver: 12345678901234567890123456789

Other FW Update Boot Rom START

4. Enter [Machine] and [Type] information according to the following table. Then touch [Fix].

Machine Type Select

Machine: [Redacted]

Type: [Redacted]

1 2 3
4 5 6
7 8 9
* 0 #
C

A B C D E F Fix

First four digits of the serial number	A7PU	A7PY	A7R0
[Machine]	6	6	6
[Type]	1	2	D

5. Touch [OK], and turn OFF the main power switch.