

# Transforming print production. Again.

**Meeting workflow needs today—and anticipating those for the future.** That's the key idea behind the Xerox® FreeFlow® Print Server version 8 with Adobe PDF Print Engine. It enables an efficient and predictable workflow for today's graphically rich applications while preparing for tomorrow's even more complex needs. It's the next generation in digital printing, made possible by the combined efforts of two of the industry's leaders: Xerox and Adobe.

## The power of collaboration.

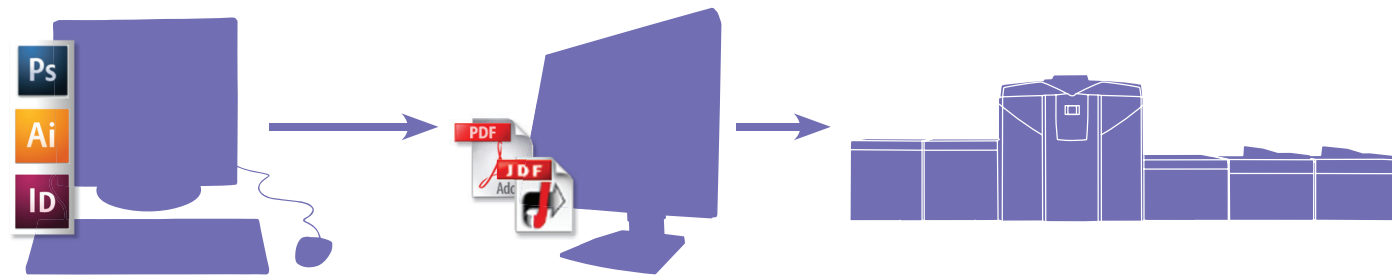
For the past 20 years, Xerox and Adobe have continually delivered innovations that have revolutionized the digital printing industry. This print server is the next logical step in that journey. It leverages the power of the Adobe PDF Print Engine and supports industry standards for PDF. Plus, it includes exclusive Xerox technology for optimal image quality and performance, including ConfidentColor Technology.

## Fewer workflow steps.

The Adobe PDF Print Engine enables a true, end-to-end, native PDF workflow. It leverages the same core technologies for color handling and imaging as are used in the creation of graphically rich creative content—so your final imaging results will be more predictable and consistent. By removing subjective decision making from the prepress process, it also

minimizes the number of proofing rounds. Print providers can fulfill the designer's vision and the customer's requirements with fewer workflow steps—saving time and money while delivering superior results.

## Maintaining design integrity with a PDF workflow.



**Creative**—Designer uses Adobe Creative Suite to create and soft proof content, saving it as a PDF

**Prepress**—PDF, along with job instructions (which can be expressed as a JDF job ticket), is automatically processed without conversions

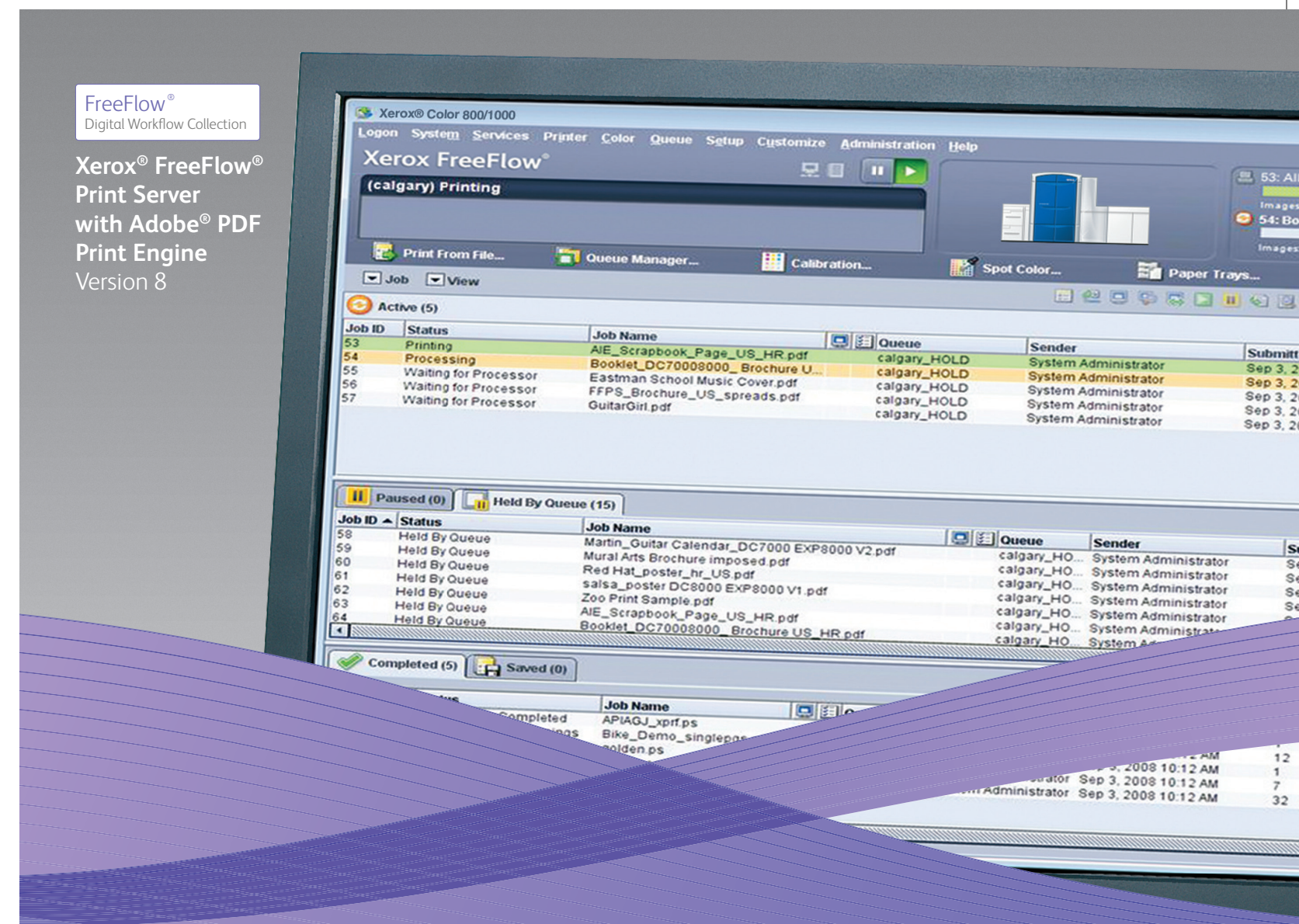
**Production**—Job is efficiently rendered at the FreeFlow Printer Server with Adobe PDF Print Engine and output to Xerox® digital presses

## Find out more.

To learn more, including which Xerox® digital print engines are supported, see your Xerox representative, call 1-800-ASK-XEROX, or visit us online at [www.xerox.com/FreeFlow](http://www.xerox.com/FreeFlow).



© 2010 Xerox Corporation. All Rights Reserved. XEROX®, XEROX and Design®, FreeFlow®, and VIPP® are trademarks of Xerox Corporation in the United States and/or other countries. Adobe® and PostScript® are trademarks of Adobe Systems, Inc. PANTONE® is a trademark of Pantone, Inc. UNIX® is a trademark of the Open Group. 04/10



# Xerox® FreeFlow Print Server with Adobe® PDF Print Engine

Now, production speed and  
output confidence come easy.



# It's the best-of-all-worlds print server that delivers end-to-end results.

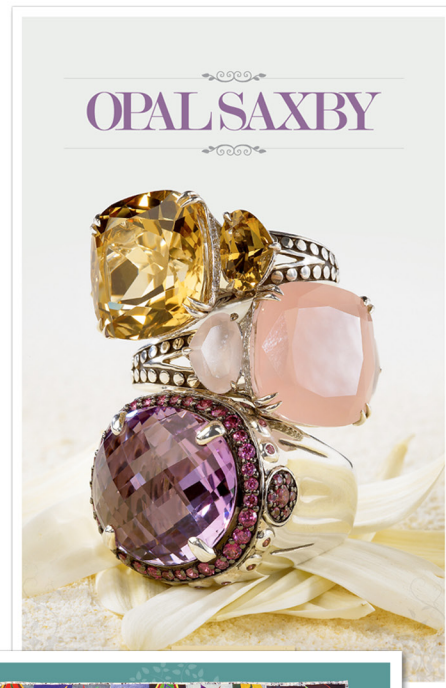
**Move jobs from creative through prepress and production with speed, accuracy, and confidence using the Xerox® FreeFlow® Print Server version 8 with Adobe PDF Print Engine.** It enables an automated, end-to-end workflow using native PDF files that not only speeds your production, but also delivers predictably outstanding results. And it delivers better-than-ever results with PostScript® files as well. Advanced color controls meet your customers' most demanding requirements, while setting the new standard for easy color matching across both digital and offset devices.

## Extraordinary color control.

ConfidentColor Technology delivers great "out of the box" color for outstanding results with little effort, while enabling advanced color management through highly visual and easy-to-use options. Innovative and state-of-the-art calibration technology delivers reliable results, automatically optimized for each print engine. Advanced profiling technology provides accuracy that exceeds industry standards, including PANTONE® spot colors, tints, and sweeps. Want the flexibility to fine-tune your color? The spot color editor lets you view edits on screen, print samples, make changes, and then accept them—cutting down on operator error and adjustment time. Plus, you can accurately apply color management down to the page level using tone reproduction curves.

## Predictable and consistent results.

With a PDF workflow enabled through the Adobe PDF Print Engine, special effects and graphically rich content added by the document designer print as expected. You don't need to compensate for transparent objects or mixed color spaces—such as by flattening content upstream. And there are no compromises in vibrant color output. Designers can design with creative freedom, knowing that their work will print as intended.



## Easy-to-use interface.

An intuitive and familiar interface enables a streamlined workflow, whether the operator is a trained or casual user. Assess job status and monitor your workflow at a glance, with a highly graphical display that includes print configuration, toner level, and network status, among other attributes. Plus, you can easily configure the interface to focus on what you use most often—including shortcuts for one-touch ease of use.

## Powerful and timesaving job management.

You'll have the flexibility to selectively RIP and hold a job—then proof, print, save, archive, and reprint at will. This saves on the time associated with reprocessing, such as when proofing before a long print run. You can also set up customized print workflows according to the job or customer, using over 250 print queues. Then, utilize those queues over and over without having to program each job. Additional features—such as job forwarding and the ability to interrupt a job to print another higher priority one—give the operator complete control.

## Press-to-press consistency.

Benefit from predictable portability with support for PDF/X workflows—including PDFX-4—and the ability to move jobs between offset CMYK and digital RGB workflows. Plus, color conversion, trapping, and imposition are integrated and performed at the print server. Files can reliably be sent to multiple locations and multiple printers with consistent results. The print server's consistent color mode provides built-in color matching based on established press standards for press-to-press consistency.

## Benchmark security.

Four built-in security levels—all based on the stable and secure UNIX® operating system—give you the option to select the security conditions that best meet the needs of your printing environment. You can also adjust these security levels to create a custom fit. Strong authentication features limit access to authorized users, both locally and remotely. And you can enable options such as a removable hard drive and disk overwrite. No one offers a more secure or more fully integrated system.

## Perfect from start to finishing.

Now it's even easier for you to succeed with today's hottest applications—including books and booklets. For example, automatically impose multiple signatures with multiple sheets per signature. You can specify the number of sheets, or let the print server do so automatically. Even select options for creep in or creep out, as well as bind-edge for alternative reading directions. Whatever the type of application or level of its variability, you'll be able to automate more job steps for faster turnaround while delivering consistently outstanding quality.

## Outstanding variable data capabilities.

Gain a competitive edge by customizing, personalizing, and adding more value to the documents you produce—and with enhanced processing speed and capacity. Xerox patented parallel RIP technology, along with advanced caching capabilities, speeds the production of hundreds of small jobs concurrently or a single complex variable job with thousands of database entries. Using data-driven subsets, it provides more flexibility in production without extensive upstream programming. Because it supports today's most popular file formats—including VIPP®, PPML, PDF, EPS, PostScript, and PCL5c—there's no need to reconfigure or reboot for different jobs.

